

Mantra Softech India Pvt Ltd.

COMPANY PROFILE

2019-20

We help you to secure your business. We are industry leaders in providing customized security solutions.



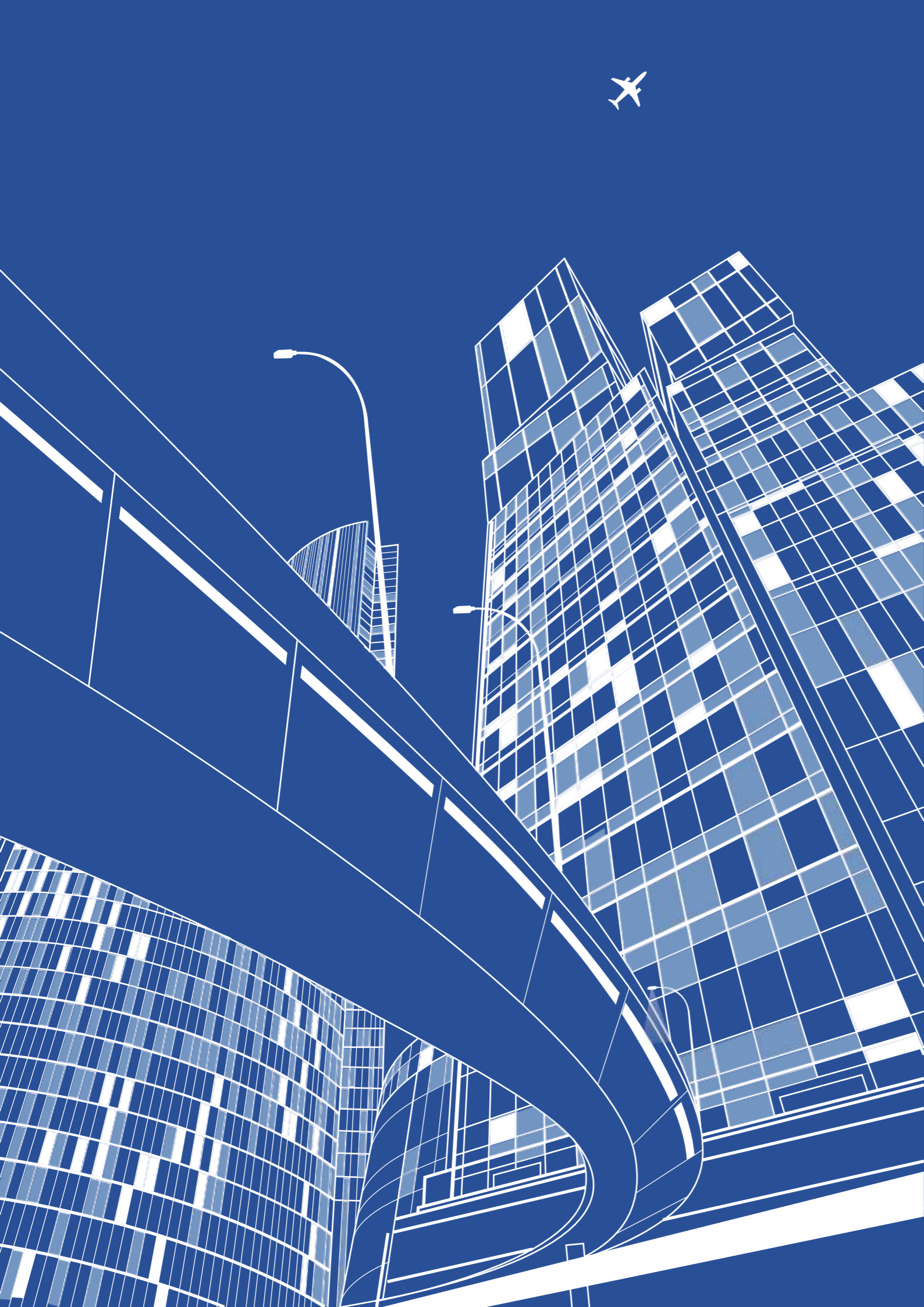
MANTRA

B203, Shapath Hexa,
Opp. Gujarat High Court,
S.G. Highway, Sola,
Ahmedabad - 380060, Gujarat.

✉ sales@mantratec.com 🌐 www.mantratec.com ☎ +91-079-49068000 Ext.:2

Copyrights 2019 Mantra Softech India Pvt Ltd. All Rights Reserved.

MANTRA
Innovation that counts



MESSAGE FROM MANAGEMENT

“Mantra is ready to cater to tomorrow’s markets, and to serve evolving customer needs through cutting-edge solutions.”

Quick Adaptability to new technology and strong business strategies has made Mantra, the fastest growing company in the Biometric and RFID world. At Mantra, we are motivated to remain an innovative market leader in our field. We are one of the leading Biometric brands in India. We are into an ongoing improvement and growth strategy, which has helped us to increase our production capacity manifolds.

Our trade and SI partners play an essential role in our success story. Our unparalleled multilayer distribution network and a deep-rooted trusted relationship with our trade and SI partners are the foundation of the success of Mantra. We wholeheartedly appreciate the dedication and commitment of every member of Mantra team which has made Mantra the most trusted brand. We touch the lives of millions of people around the world who have our Biometric and RFID products and solutions. At present, we export to countries across Asia, the Middle East, and Africa and have built an extensive network of partners and distributors. Customers rapidly growing requirement for the complex and sophisticated security system is the inspiration behind Mantra's Innovative products and solutions. While we continue to focus on our growth and performance, we remain equally focused on our social responsibility towards the environment and our communities. Wherever we work, whomever we work with, we follow best practices and aspire to leave a positive impact on our communities.

The journey of Mantra Softech is phenomenal, with the support of employees, team members and clients we have achieved many milestones, and we are confident that the company will continue to scale benchmarks of excellence for years to come.

MANTRA

INNOVATIONS MAKE AN ORGANIZATION GROW AND PROSPER.

MANTRA SOFTECH IS DEDICATED TO ADVANCING SECURITY THROUGH INNOVATION IN TECHNOLOGY FOR IMPROVING BUSINESSES SECURITY AND INDIVIDUAL IDENTIFICATION.

Why Can Mantra Help ?

Mantra has extensive experience of 13 years with the World's Largest National ID Project "Aadhaar," India's one of the biggest Access Control Project and an Identity-based Food Distribution Project. Mantra has also worked with the top banking & financial institutions and corporates of India. Mantra is known for its innovations and will provide the latest technology based products and solutions to our customer for enchaining the security and operational efficiency.

Whom Can Mantra Help ?

The Governments of all developing countries are looking for National ID Projects, and Citizen Verification projects through biometrics. Even Banking & Telcos companies are using biometric technology to carry out e-KYC for customer onboarding and verification processes.

Besides this, Corporates are looking for Access Control, Worker Management Projects to safeguard and improve the productivity of their organization using RFID and Biometric based technology. Today's modern organization has unique biometric and RFID based technology requirements as per their business domain, location, and nature of work; therefore System Integrators are looking for a range of advanced business security solutions which are innovative, tailor made and can be easily implemented at clients end. That's why we at Mantra offer a variety of advanced Biometric and RFID solutions to cater to all these needs.

How Can Mantra Help ?

Mantra is one of the leading Biometrics, Access Control & RFID provider in India. Mantra leverages the next-generation technologies like Biometrics, RFID, and Artificial Intelligence to develop advanced Access Control Solutions, support National ID, eKYC, and Individual Verification Projects. With groundbreaking innovations and cutting-edge techniques, Mantra can help to meet the new and evolving security demands of today and tomorrow through secure identity management and authentication services.



CONTENTS

—
01

ABOUT MANTRA

—
02

MANTRA'S EXPERTISE

—
03

MANTRA'S BUSINESS

—
04

BIOMETRICS FUTURE

—
05

COMPANY PHILOSOPHY

—
06

MANTRA'S HISTORY

—
07

RESEARCH & DEVELOPMENT

—
08

OUR BRANDS

—
09

ACHIEVEMENT CERTIFICATION

—
10

OUR NETWORK

—
11

COMPANY CAPABILITIES

—
12

ORGANIZATION STRUCTURE

—
13

CUSTOMER PROFILE

—
14

MANTRA'S NEW PRODUCTS

—
15

MORZEL

—
16

MULTI MABIS

—
17

CLIENT FACING BRANDS

ABOUT MANTRA

Mantra Softech India Pvt. Ltd.

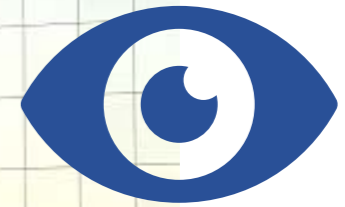
Mantra Softech is a global hi-tech manufacturer of biometric products and solutions. We offer a wide range of products in the biometric and RFID industry. Mantra was established by like-minded visionaries in Ahmedabad, Gujarat, India. It was registered as Mantra Softech India Private Limited on 06 April 2006. Customers rapidly growing requirements for the complex and sophisticated security system are the inspiration behind Mantra's Innovative products and solutions.

Globally recognized as one of the leaders in Biometric and RFID technology field, Mantra continues to position itself as an innovation-driven brand. Mantra's product portfolio includes Fingerprint Sensors, IRIS Sensors, Integrated Fingerprint Devices, Integrated IRIS Devices, POS / MicroATM / Financial Terminal, IRIS Recognition in Mobile and many more biometric devices. New products and solutions are added every year in our solution and in the product category to meet the future needs of business in terms of their security concerns. Our security solutions include Business & Enterprise Security System, Integrated Security Solution, Access Control System, Smart City Solution, Airport Solution, and many more RFID and Biometric based solutions which can enhance security, productive and transparency in small to large enterprises.

Mantra is the pioneer of implementing Aadhaar-based biometric authentication devices which are currently used by the Indian Government for monitoring the official attendance and in implementing the social welfare schemes for beneficiaries' identification. Apart from this, banking, telecom and insurance sector are also using it for customers eKYC purpose. Our manufacturing units are equipped with cutting-edge technology and powerful automation to avoid any human error in manufacturing Assembly line. Mantra's state-of-the-art Manufacturing facility is located at Ahmedabad.

Our valuable assets are Mantra's brands, R&D, and Manufacturing facilities along with unparalleled, multi-layer distribution network. With a view of taking our range of products to distant corners, we have carved out a strong network around the nation. Also, Mantra's international presence spans across African and middle eastern countries.

Mantra is one of the few players in the industry to have successful R&D facilities to improve product functionality and develop new products which are future proof. For quality standards, Mantra is committed to the core values of integrity, ethical practices, customers satisfaction, and the eco-friendliness. Brilliant quality and design achieved by the vision of our founder have led Mantra to become a global brand and tagged as the powerhouse of biometric innovations.



COMPANY PROFILE

MANTRA'S EXPERTISE

WE ARE EXPERT IN IMPLEMENTING INNOVATIVE SOLUTIONS TO HELP TO BECOME SAFER, SECURE AND SMARTER.

Mantra Softech India Private Limited is a leader in biometrics hardware, software, and integrated solutions development. Known simply as "Mantra" across India, we offer our clients an innovative approach to safety and security solutions for their offices, corporate buildings, and industrial plants.

Our experience in biometrics technologies and ID management solutions help us in creating a strong citizen identity solution for public services. We ensure timely delivery and economical solution for large-scale citizens' identification solution for the Governments.



Fingerprint Sensors



Fingerprint scanners are used to recognize the fingerprint of an individual for authentication purpose. Fingerprint scanners built with the Mantra fingerprint recognition module is known in the industry for the best performance, sustainability, and accuracy. A Fingerprint scanner is a safe and reliable machine for accessing data, network, computer, or any device compare to using the password to do so. Mantra has Indigenously developed various high-quality fingerprint scanners certified with FBI, STQC, UIDAI, BIS, and various other international recognized certification agencies.



IRIS Sensors



Mantra has built high-quality IRIS Sensors for IRIS Authentication of an individual. Mantra MOBIIRIS sensor module can be used as a component in mobile devices and handheld devices to enable them with IRIS authentication feature. Mantra IRIS sensors are also used as standalone or PC/Mobile-based for IRIS authentication. Mantra IRIS device MIS100 can read IRIS from the distance of 10cm to 30cm with high resolution.



Integrated Fingerprint Devices



Mantra introduced various Integrated Fingerprint Devices for multiple usages like Access Control, Time Attendance and Worker Management. These devices are WiFi, and 3G/4G Enabled terminal, developed on Android and Linux environment. For integration, these device comes with SDK/API so that client can easily integrate the device with there own application.

Integrated IRIS Devices



Mantra Integrated IRIS Devices are available in Android and Linux environment. We also provide SDK/API to customers, so that the customer can develop their customized applications using our integrated IRIS Device.



POS / MicroATM / Financial Terminal



Mantra introduced mTerminal100 and mTerminal200, which provides an all-in-one solution with mobile terminal along with various biometric technologies. These terminals are used in Financial applications, Point of Sale applications, and various government applications and projects.



Biometric Enrollment Devices



Multi fingerprint & dual iris sensors are well suited for biometric enrollment & verification process. It includes MORPHS 60 and MATIS DX biometric sensor devices to proficiently enlist a person by scanning all ten fingerprints & dual iris of individuals precisely.

MANTRA'S BUSINESS PROJECT SYSTEM INTEGRATION

We pay careful attention to client's needs at every point of interaction and we are passionate about delivering security solutions on time. We have a very prompt customer service team which always tries to resolve all the call requests on the same-day. Mantra has the people, technology and infrastructure to deliver exceptional security and surveillance solutions for your business.



Business Security Systems

Growing with every project, gaining invaluable experience and in-depth knowledge of clients' requirements, Mantra projects & SI division is the concept-to-completion solution provider for enterprise authentication platform of manpower mapping and tracking.



Enterprise Security Solution

The Enterprise Biometric and RFID Security Solution is used for all types of businesses. Mantra's Enterprise Security Solutions are known for its scalability, reliability, and cost-effectiveness.



Access Control Systems

With decades of experience in the development of reliable access control solutions for physical and logical access, Mantra is trusted by organizations and governments to provide unsurpassed access control security and protection solutions.



Integrated Security Solution

Securing today's business landscape involves a strategic methodology and proactive approach to stay ahead of possible risks. Plants and Industries need hi-tech building access control system to secure sensitive areas through utilizing access level credentials.



Smart City Solution

Mantra's Smart Cities Solution include public safety, traffic management, parking management, and waste management.

With increasing urban populations and the growing demands faced by cities, the Government needs to upgrade their cities' infrastructure and safety systems. Mantra Smart City Solution gives city's operation managers a way to upgrade the results like they have never seen before.

RADIO FREQUENCY IDENTIFICATION

Our system adopts the latest RFID technology and uses the corresponding RFID tags for the inventory, storage areas, warehouse equipment, vehicle access, and product resource management.

Radio Frequency Identification is the next generation of Auto Identification and Data Collection (AIDC) technology which helps you automate business processes. This automation can provide accurate and timely information without any human intervention. Access to such information where you can individually identify each one of the tagged items uniquely helps in improving your processes and making informed decisions.

Mantra, with its technical expertise in RFID Technology and its physics, focuses on designing, developing, innovating, deploying, and sourcing RFID hardware solutions.

Using the latest products and cutting-edge technology, we bring you a solution to Seal & Track Shipping Containers using RFID Tags.

MANTRA RFID SOLUTION



Solution Partner

Solution Partners are an integral part of the technology-based companies.



One-Stop Solution

Serve as a one-stop-shop for RFID hardware requirements.



Customization

A broad spectrum of customized RFID solutions for industry.



Support

Be your partner for the journey of RFID deployment right from the pilot to implementation.

BIOMETRICS FUTURE



Internet of Things

Fingerprint Scanners are used for recognizing and authenticating the fingerprint of an individual. Fingerprint recognition module is considered as the reliable, sustainable and highly accurate device. Fingerprint readers and scanners are safe and reliable devices for any security authentication system that eliminates the need for remembering a password.

Entering an ID and password is outdated when it comes to IoT technology because passwords can be forgotten, shared, or guessed. Biometrics make use of an individual's physiological and behavioral characteristics such as fingerprint, iris, and vein patterns to identify the user. Since these characteristics are unique to an individual, they can be used as a secure method of authentication. Biometrics also do not change with time or age, nor are they easy to replicate or spoof. These qualities give biometric an edge over the traditional methods of identification.

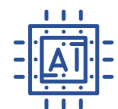


Blockchain

Biometrics has proven to be one of the essential technologies for identity management. In the wave of the industrial revolution 4.0, blockchain is considered as a key to digital transformation and building a future information technology platform.

Blockchain technology is primarily designed to maintain the distributed decentralized databases, which consist of a growing list of data records in order to preserve the integrity, singularity, and validity of stored information without involving a third party for verification purposes. Information in the blockchain cannot be hacked or changed, and can only be added with the consent of all the nodes in the system.

By combining biometrics and blockchain, identity information will be stored in a distributed ledger system, meaning that the authorities no longer have access to your personal information. This offers you complete control over what information you share, and with whom.



Artificial Intelligence

In a traditional system, initial enrollment in the biometric system attains the primary samples and a given tolerance for error is implemented. However, in an AI biometric system, artificial intelligence can account for and learn subtle changes in the person to be authenticated. Too many "perfect" attempts could appear as an anomaly because it is apparent that this is not the normal behavior of a human.

The real challenge in biometrics isn't in trying to identify a user, but in determining if the biometric data presented during login is being captured from a real human or an inanimate "spoof."

AI enables a software-based approach to determine the liveness of users. The software is developed by gathering correct data of the user to create algorithms for AI software to perform the task of checking the liveness of the user.

ADVANCEMENTS IN BIOMETRIC



Face Recognition

A biometric facial recognition system identifies or verifies a person by extracting and comparing selected facial features from a digital image or a video frame to a face database. Recognizing the human face includes concentrating on certain unique features, such as the jaw, cheekbones, face shape and so on. AI-equipped cameras interpret facial expressions of people by measuring nodal points and the distances between certain points on the face. Face expression may be represented by geometric or appearance features, from transformed images such as dynamic models and 3D models. The melding of artificial intelligence, image recognition and face analysis make face detection possible even after there are subtle changes in a person's face.



Palm Vein Recognition

Palm vein recognition is the next-generation biometric contactless authentication method used to examine the unique patterns of an individual's palm veins for precise identification. The palm vein recognition method uses near-infrared technology for scanning subcutaneous palm veins of an individual to recognize a pattern, which is unique to every person. This state-of-the-art technology is fast, highly accurate, and secure to protect individual privacy. As the palm vein pattern of a person is virtually impossible to forge, it is considered as the most reliable biometric technology.



Behavioural Biometrics

Behavioural biometric systems monitor the user passively without any explicit gestures and try to deduce implicitly if it is the same user. The behavioural biometrics is classified into five categories based on from where the data is collected.

Authorship Based Biometrics

A text, or painting or anything authored by a person is used to analyze the style and create a unique identity.

Human-Computer Interaction Based Biometrics

The behavioural data regarding how a person interacts with computers and intelligent devices are used to create a unique identity of the person.

Indirect HCI Based Biometrics

This is an indirect form of human-computer interaction, where data regarding common usage of computer for different purposes are measured, collected, and analyzed.

Motor Skills Based Biometrics

Muscle movements depend upon the proper functioning of the brain, skeleton, joints, and nervous system and thus, motor skills indirectly reflect the quality of functioning of such systems, enabling precise identification of a person.

Purely Behavioural Biometrics

Humans use different strategies, skills, and knowledge while performing mentally demanding tasks. Purely behavioural biometrics quantifies such behavioural traits for successful identity verification.

COMPANY PHILOSOPHY



Vision

Vision is to become the world's leading identity security company to make the world more secure.



Mission

The mission is to resolve identity and security problems across the world by means of the most innovative and user-friendly products and solutions.



Value

- Works continually to prove the company slogan "Innovation That Counts".
- Customers are all-weather friends.
- We strive for excellence with constant improvements.
- Inspire enjoyable work culture & employees centric.



Pledge

We shall never indulge in any unfair practices. Employees are the greatest resources and we treat them as partners.



Philosophy

Throughout our history, Mantra has conducted its business with integrity. Our dedication to the principle of "doing the right thing" improves our long-term business performance, reputation, productivity, and employee retention.



Ethics

Integrity is at the center of everything we do at Mantra. Our Company's ongoing success stems from our deeply ingrained culture of ethics, honor, & trustworthiness. Acting with integrity allows us to meet the high expectations of our customers, partners, & communities, and gives us a competitive advantage. We believe that conducting ourselves with integrity is the only way to do business.



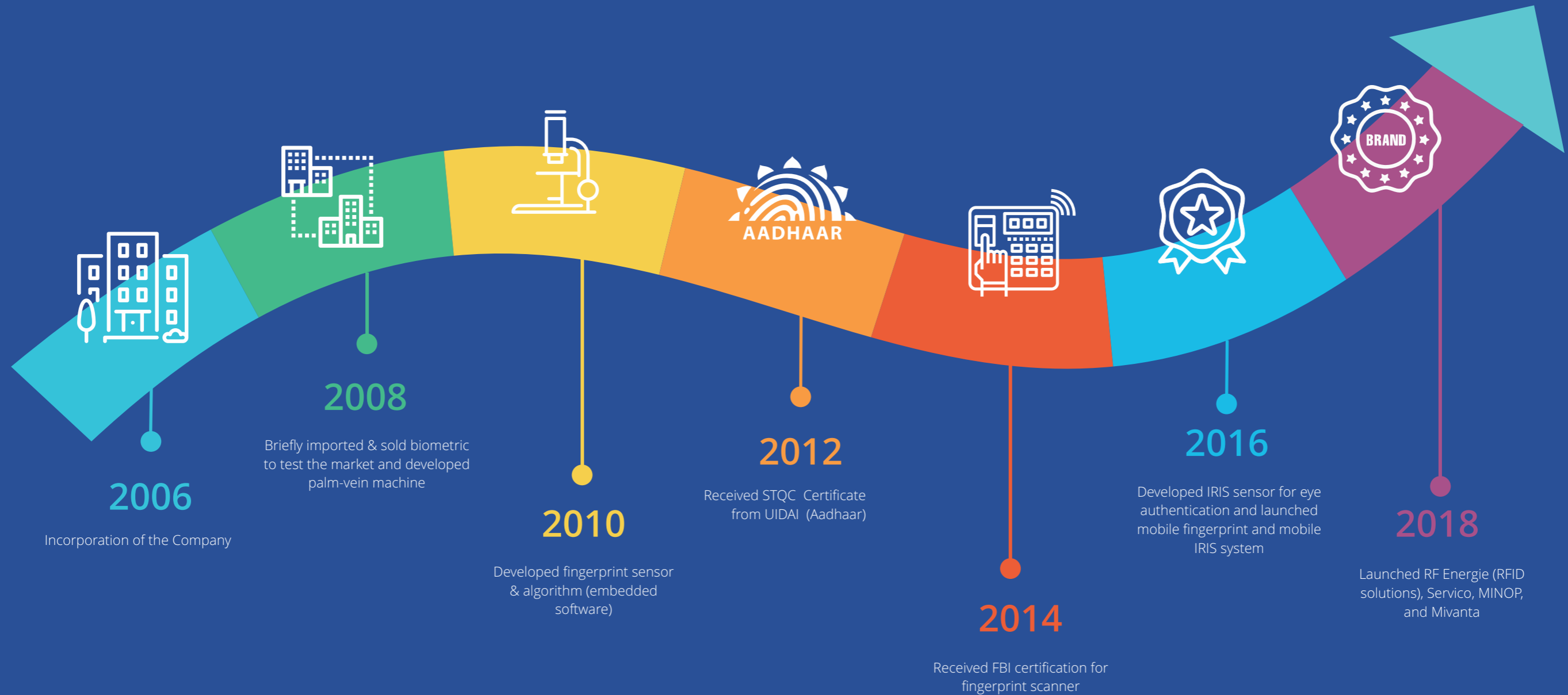
Culture

As a global leader in security and life safety, our diversity and culture are built on a foundation of these four key values, which shape how our employees interact with every stakeholder and with one another. Together, we drive our company forward. Explore your possibilities for vital and engaging work as you challenge yourself to expand your skills and career opportunities.

MANTRA'S HISTORY

Providing Business Security Solutions

Our story began in 2006, with the foundation of Mantra Softech India Private Limited. That year, the Company has developed a breakthrough in biometrics and RFID, and in 2008, the Company opened two branches to expand to different parts of the country. Later, in 2010, the Company opened another six branches and a new R&D department. Our progress continues in 2018, as Mantra has stepped into the international market.



RESEARCH & DEVELOPMENT

We help to shift the workload of user authentication from the human being to the technology, and we are continuously creating an innovative set of technologies in biometrics. Mantra's R&D department works on developing innovative technology.

Our innovative recognition technology consists of advanced algorithms for Fingerprint and IRIS devices. These technologies based solutions, conveniently and securely authenticate users with any third party application. Our technology solutions are based on cutting-edge research and have been implemented by hundreds of users across the globe. Our Biometrics software is designed in such a way that it can be integrated with any third party platform, operating system, and application to provide the best user experience.

Mantra R&D develops innovative technology-based products and solutions for customized requirements of the business. These solutions are designed to address the business-specific problems. With years of experience in the security, surveillance, and biometric system, we have developed our expertise in products and solutions development. Mantra's R&D is positioned as a custom products and solutions provider to help companies to secure and improve operational efficiency to achieve company goals.

MANTRA R&D OBJECTIVE

New technologies are changing our world at a faster pace, creating new hurdles as well as new opportunities. Through Research & Development Team, Mantra aims to play a vital role in creating innovative biometric technologies that will shape the future. Mantra works with governments and leading business to resolve significant security and identity challenges.

MANTRA'S RESEARCH & DEVELOPMENT

Product Design Engineering

Our modern product engineering encompasses in-depth research and analysis to identify the right technologies to achieve the best performance while incurring a minimal cost.

Optic and Imaginary Engineering

We produce sophisticated optics and optical systems for absolute precision, reliability, and speed. Our modern optical systems are integral to our biometric systems.

Embedded Software Engineering

Embedded Software Engineering is the method of controlling different devices and machines. A typical embedded system requires many programming tools, microprocessors, and operating systems, created by embedded software engineers, who tailor their development to the hardware on which it will run and which will control it.

Embedded Hardware Engineering

Mantra R&D specializes in biometric hardware engineering and design, having invested decades of research in developing engineering solutions for embedded hardware. Our cutting-edge solutions also extend to product testing and value-added engineering.








POWERFUL AND EASY CLOUD-BASED ATTENDANCE SOFTWARE & SOLUTIONS

MINOP Cloud-based Attendance
Tracking & Payroll Assistance System
for Small To a Large Organization.

MINOP is a brand from Mantra Softech a leader in Biometric security and solutions provider in India. MINOP cloud-based time and attendance system provide a comprehensive, accurate, and affordable solution to the business.

MINOP specializes in the design and developing of cloud-based time and attendance software systems, which gives real-time access to your employees' attendance records. Whether users clock in via the mobile application, web application or through a biometric device their data is sent instantly to administration dashboard of cloud-based attendance software where it can be compiled automatically into a range of reports including payroll & attendance records.

MINOP cloud-based system design goal is to have time-attendance and Payroll assistance system to be simplified with higher accuracy, and security for managing the workforce in the organization. MINOP does not require investment in proprietary software license with hardware or any initial infrastructure to implement the time attendance system in the organization. Currently, organizations that are using MINOP are observing an increase in their employee productivity.

-  **No more Fake Punch In or Punch Out**
Uses camera for marking staff attendance.
-  **Real-Time Monitoring**
You will know immediately, in real-time which staff members are late or absent
-  **No Expensive Hardware**
There is no need to spend a single cent on your punch card and storage server.
-  **Instant Reporting**
Download various reports instantly.
-  **It's simply simple**
Simple pricing structure. Upgrade when you need.

OUR
BRANDS



COMPANY PROFILE

www.minopcloud.com



TRACK, MANAGE & PROTECT WITH RFID TECHNOLOGY

Choose from the Widest Range of RFID Solution



RFENERGIE is specialized in RFID and developing a solution based on RFID Readers, Tags and Controller. We bring efficiency, reliability, and accuracy to our customers with RFID solutions and technologies. When businesses select us for there project, we first understand what it takes to make every RFID application successful in the project.



The RFENERGIE provides RFID solution for Inventory Management, Asset Tracking, Container Tracking, Access Control, and Personal Identification.



OUR BRANDS

SERVICO

SUPPORT SERVICES

Biometric Device Maintenance & Service Support to Enhance Customer Experience



SERVICO is engaged in offering state-of-the-art Biometric Fingerprint Attendance Machine Maintenance Services to our clients across the country. SERVICO'S services are highly preferred, as we ensure that the installed Biometric Device and Software work with precision and reduce the chances of error.

SERVICO is backed by a team of competent professionals who have years of experience in their domain and can address any complaint of the client.

SERVICO use the web-based tool, specially developed for handling clients queries, and it has the capabilities to generate and track complaints regarding the devices supplied by Mantra. The web tool also allows SERVICO to monitor the total number of complaints received in particular regions and even track those complaints in detailed so that we can allocate the resource to address the client complaint efficiently. This application will enable users to register complaints and track the status of the complaints. In addition, customer will also get regular updates on the raised ticket via e-mail.

OUR BRANDS



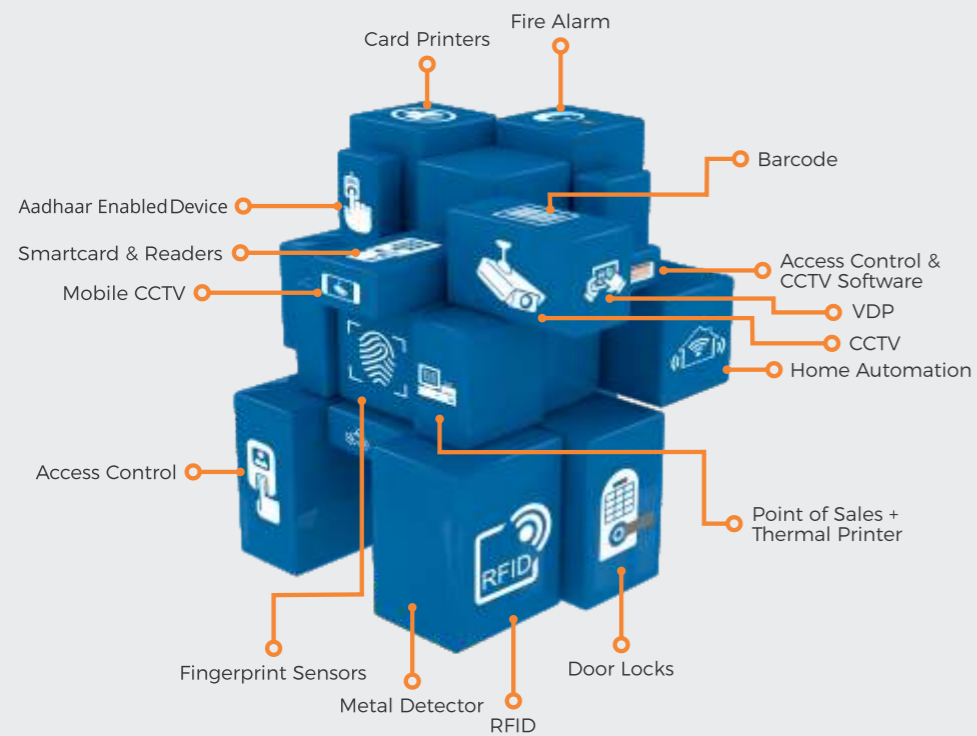
- Online Software Support
- Project Services & SME AMC
- Repairing & Replacement
- Mantra's SME Installation
- Online & Field Maintenance Support
- Partner's SME Installation
- Manpower Services
- Online Complaint Tracking

ALWAYS AT YOUR SERVICE !

www.servico.mantratecapp.com



The Widest Portfolio of Security and Surveillance Products & Technology Solutions



A venture by Mantra Softech, Mivanta carries forward the legacy of precision, quality, and trust. It has established itself as the most reliable supply chain business platform in the digital security industry. Mivanta is a platform for all security and surveillance product requirement from small to a large System Integrator for these business clients. Mivanta has the widest range of affordable digital security products which can seamlessly integrate with other systems for tailor-made solution needed by System Integrators for its clients. Mivanta creates a single point window where all the Security and Surveillance products come with best in class technology and assured service support. To offer its channel partners the unfazed success and growth opportunities, Mivanta has tied up with the digital security products brands which have good reputation and esteem in the industry. Through a dedicated team of technical professionals, Mivanta ensures smooth and satisfactory after-sales service all the time.

Backed by the industry expertise and experience, Mivanta has brought the range of innovative and integrated security surveillance products that will accelerate the channel partner growth in the market and helps them to create a niche in the industry. Through multiple tie-ups with prestigious system integrator and experts, Mivanta has developed its insight to understand what today's business security short term and long term needs are.

OUR BRANDS



ACHIEVEMENT CERTIFICATION

Developed the First Optical Fingerprint Sensor - MFS100 in India



Developed the First IRIS Sensor - MIS100 in India



First Biometrics Company in India to be UIDAI Enrollment Agency



Developed First Web-Based GPRS Fingerprint Attendance System

Mantra's focus is to produce innovative products and solutions with some salt of innovations. The company focuses on promoting intellectual qualities in an individual and the team to get the best out of them for developing innovative security products and solutions cost-effectively.



Secured Lowest FRR Ranking at FRR Competition by UIDAI / STQC / CDAC



India's First Company to have an FBI Certification

TESTIMONIALS



“ Appreciation Certificate from MCGM (Municipal Corporation of Greater Mumbai). ”



“ In the fast-paced world of financial services, Our Bank trusts Mantra to protect our evolving security needs. ”



“ The reliability and overall performance of the solution is unique and the services offered are commendable. ”

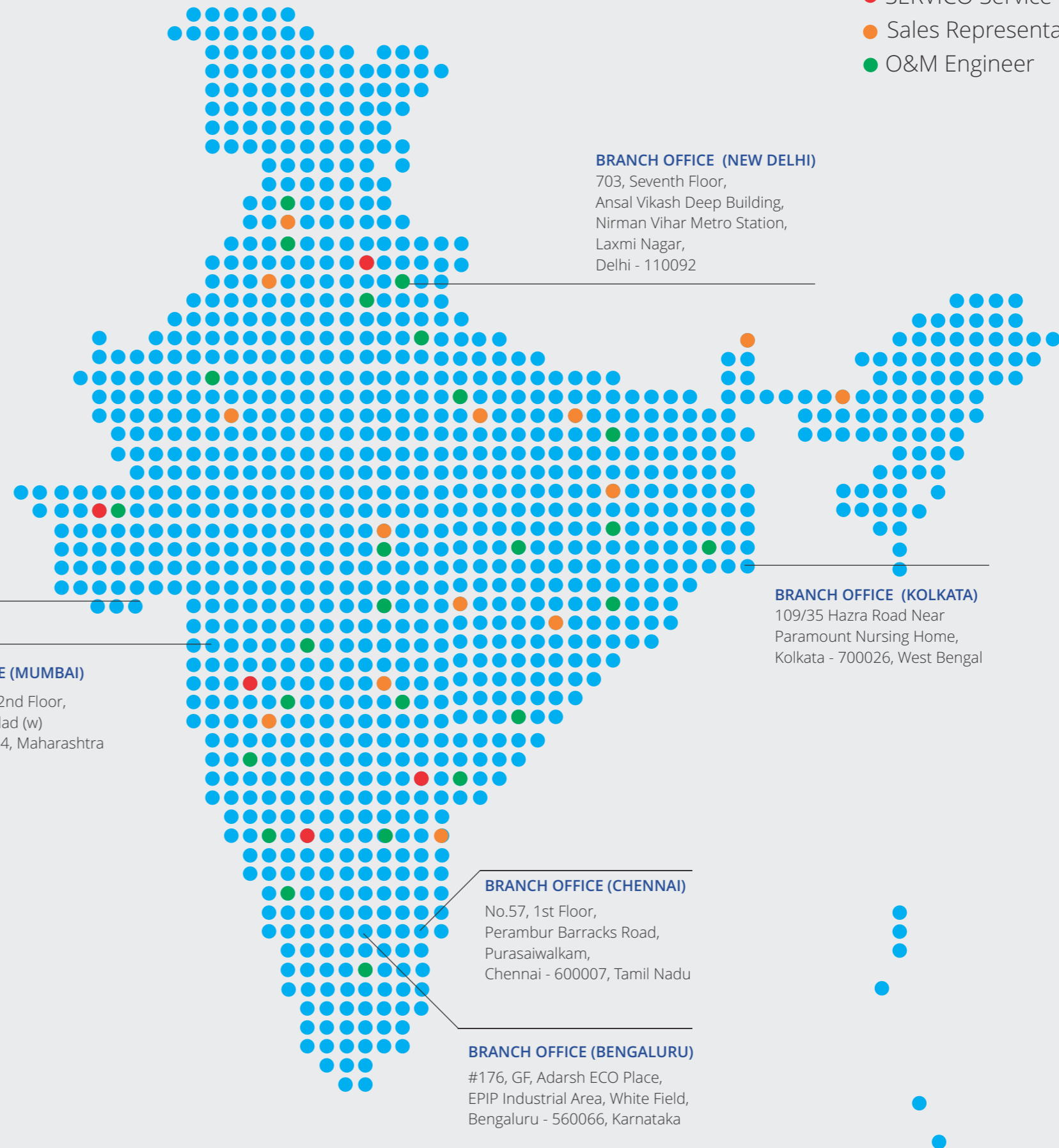


“ Appreciation certificate is given from Adani port for successfully completing Security & Surveillance System setup. ”



OUR NETWORK

- SERVICO Service Center
- Sales Representative
- O&M Engineer



HEAD OFFICE (AHMEDABAD)
 B203, Shapath Hexa,
 Opp. Gujarat High Court,
 S.G. Highway, Sola,
 Ahmedabad - 380060, Gujarat.

BRANCH OFFICE (MUMBAI)
 S-11, Sej Plaza, 2nd Floor,
 Marve Road, Malad (w)
 Mumbai - 400064, Maharashtra

BRANCH OFFICE (NEW DELHI)
 703, Seventh Floor,
 Ansal Vikash Deep Building,
 Nirman Vihar Metro Station,
 Laxmi Nagar,
 Delhi - 110092

BRANCH OFFICE (KOLKATA)
 109/35 Hazra Road Near
 Paramount Nursing Home,
 Kolkata - 700026, West Bengal

BRANCH OFFICE (CHENNAI)
 No.57, 1st Floor,
 Perambur Barracks Road,
 Purasaiwalkam,
 Chennai - 600007, Tamil Nadu

BRANCH OFFICE (BENGALURU)
 #176, GF, Adarsh ECO Place,
 EPIP Industrial Area, White Field,
 Bengaluru - 560066, Karnataka

- Total 300+ Employees across India.
- Total 4 Branch Offices across India.
- Largest Biometric Manufacturer in India.
- 20% of the Top 50 Corporates in India are our Clients.
- Serves 80% of Central Government Offices.
- Support & Marketing People in 24 States of India.

COMPANY CAPABILITIES

Project Solution

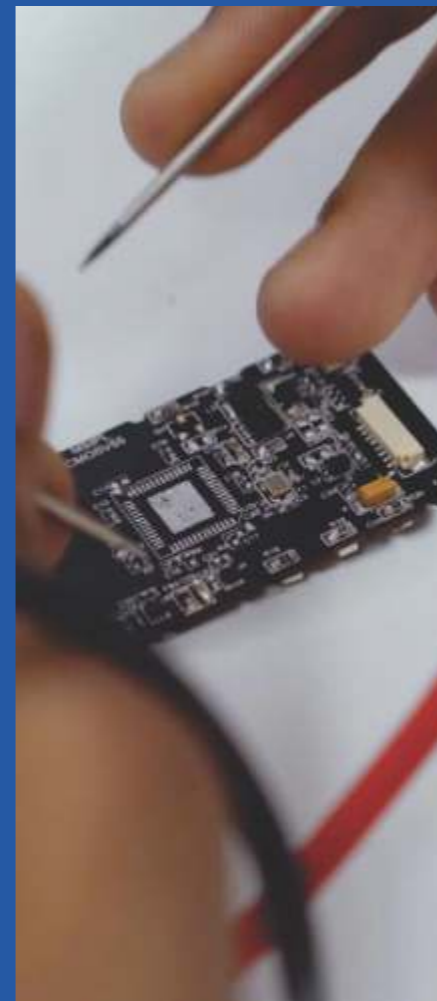
The company's strength towards innovation is an ability to integrate all of our technologies to match customer requirement. We integrate Access Control Security with Attendance, Access Control with Surveillance, Surveillance with RFID, Security with Home and Office Automation, and Biometrics with Smartcard, and so on. Our company develops most of the product indigenously, and we use imported products to match customer requirement and budget. Company has the software and hardware team to integrate any technology. We are committed to providing total quality solutions to give technology benefit in enhancing business and security.

Product Solution

Everyday technology is changing our world, making tomorrow just a little bit smoother and more secure than yesterday. We, at Mantra, are dedicated to driving these developments happening around us and supporting the evolving identity-based security programs. With powerful technological strength, Mantra is developing new technologies and solutions to offer reliable identity management solutions that include citizen enrollment and identification. Drawing upon a decade of experience and expertise in the biometric industry, we extend our support to the world's most extensive biometric ID program - Aadhaar.

Mantra's R&D division adopts the latest and secure digitization strategies to incorporate a custom GMS Android operating system with the latest embedded technology. Leveraging combined R&D strengths in manufacturing engineering, electronics, optical and imaginary engineering, our R&D team focuses on the seamless intersection of latest embedded software and hardware technology to develop cutting-edge products & solutions.

For corporates in today's world, access control plays a vital role in the security of buildings, whereas time-attendance data is requisite for smooth & efficient HR applications, such as workforce movement within the premises and payroll management. Our team focuses on developing advanced and innovative biometric identification technology for efficient time-clock and access control devices to meet both these modern-day requirements of a corporate world. Additionally, our team of qualified professionals is dedicated to implementing the latest technologies to develop the products and solutions for convenient and simple user experience.



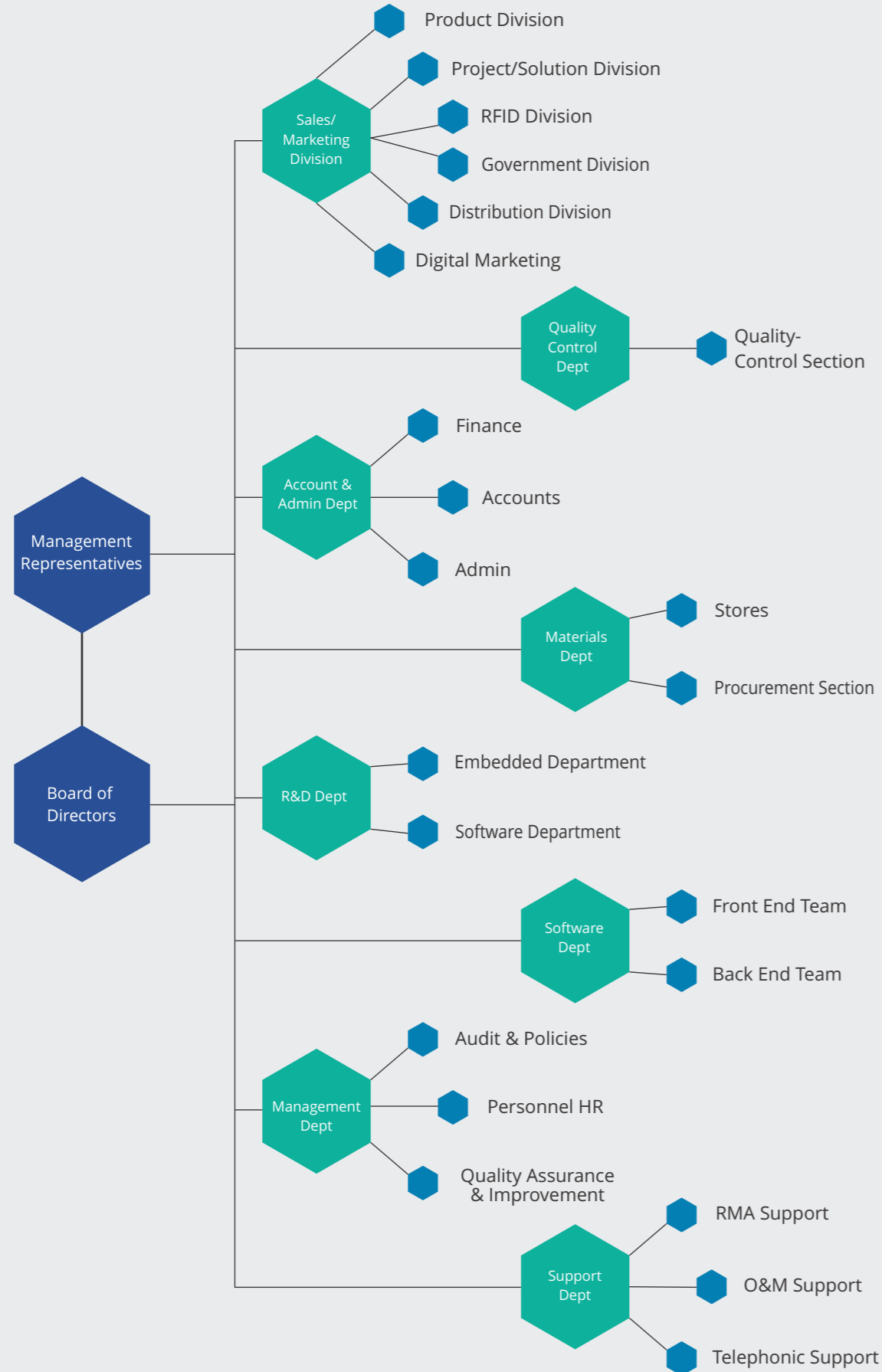
Manufacturing Strength

Mantra is one of the leading INDIAN manufacturers of Biometric Attendance System and Access Control System. We are restless in pursuit to implement latest technologies into our products and provide an excellent solution to our customers and users. To achieve this, we have set up a team of some highly qualified professionals, who work tirelessly to bring up something creative and technically advanced.



ORGANIZATION STRUCTURE

Mantra Softech India Pvt. Ltd.



CUSTOMER PROFILE



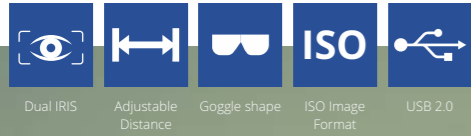
COMPANY PROFILE

- Company has a strong presence in the BFSI sector serving significant banks, NBFCs, and Asset Management Companies.
- The company enjoys nearly 50% market share for UIDAI certified products.
- Company is a partner of choice for major System Integrators (MNC as well as domestic). In many situations, SI is required to buy Mantra products despite having their own product.

NEW
PRODUCT

MATIS DX

ADVANCED DUAL IRIS SCANNER



MATIS DX is a portable and easy-to-use dual-iris capture device that can simultaneously capture both irises with higher accuracy and greater speed. The innovative dual iris scanner is packed with compelling features that make the device suitable for diverse biometric enrollment and identification applications. Designed with the latest biometric technology, MATIS DX is physically robust, highly reliable, and durable.

The dual iris scanner comes with the auto capture functionality for quick and easy double iris image collection. The device conforms to IP54 standards for water and dust resistance. MATIS DX offers a convenient way to capture high-quality dual iris images to meet the demanding ANSI NIST and ISO standards. MATIS DX has an adjustable interpupillary distance range, and the device is compliant to eye safety standards. The design of the MATIS DX further enhances its durability allowing easy cleaning of the device. MATIS DX meets or exceeds, CE, FCC, RoHS and WHQL certification standards.



Mantra Softech India Pvt. Ltd.

NEW
PRODUCT

MORPHS60

MULTI FINGERPRINT SCANNER



MORPHS60 is a unique multi fingerprint capture device having a wide scanning area which makes it capable of capturing all ten fingerprints (four finger-slaps and thumbs of both the hands). MORPHS60 is FBI Appendix F certified scanner that captures both fingerprint ID flats & rolled. The device delivers fast, accurate, and reliable fingerprint capture results for biometric enrollment applications.

MORPHS60 is an innovative device, designed to operate under a variety of environmental conditions making it ideally suitable for public, commercial, and government programs. Typical use cases focus on accurate, reliable identity enrollment, such as border control, electronic ID, national ID, driving licenses, healthcare, ration cards, social welfare, and ePassport issuance.



COMPANY PROFILE

mBrix

SLICK BIOMETRIC DEVICE FOR TIME ATTENDANCE & ACCESS CONTROL



High Aesthetics Quotient | IP54 Dust & Water Resistant | IPV6 Ready | Inbuilt WIFI | Optional GSM | 32-Bit ARM Cortex M4 | 3.5" COLOR LCD

mBrix is an embedded biometric-based attendance & access control system. The device offers a seamless solution that prevents unauthorized access on the premises and is also capable of recording the time attendance of the users. mBrix can be useful in various industries and segments such as education, retail, healthcare, hospitality, banks, offices, factories, government premises, and many more.

mBrix comes with a lot of captivating features to meet the time attendance and access control project needs. The smart product having 3.5" stunning-display offers the functionality of both the time attendance and access control in a single device. mBrix provides greater security and superior performance by featuring the latest fingerprint algorithm coupled with a powerful 32-Bit ARM Cortex M4 CPU.

The fingerprint sensor employed in the device holds CE, FCC, RoHS, and STQC certifications, which makes it reliable, safe, and secure to utilize. mBrix has the dual modality of an access card reader and fingerprint scanner, having a built-in battery backup of 2000 mAH for uninterrupted operation even in the event of power failure.



MFSTAB II

SEAMLESS BIOMETRIC TIME ATTENDANCE & ACCESS CONTROL DEVICE



Fingerprint Scanner | Bluetooth | Android OS | Camera | Inbuilt WIFI | QR Code Scanner

For many organizations, access control has a vital role to play in the security of buildings, while time & attendance data is imperative for HR applications, for assisting with payroll and personnel management. Mantra's seamless biometric time attendance and access control device MFSTAB II meets both these needs with the help of an advanced biometric algorithm and PIV/STQC certified FAP10 scratch free biometric fingerprint sensor.

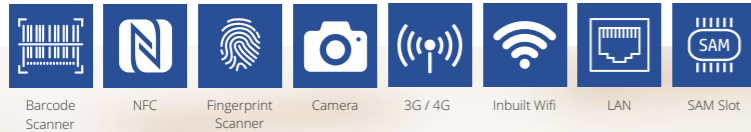
MFSTAB II is a wall-mounted time attendance & access control system. The device is highly durable as it comes with a capacitive scratch resistant touch screen. MFSTAB II utilizes the latest biometric technology to authenticate and identify users with the help of their unique fingerprint impressions. The device exhibits extended versatility with built-in GPRS, 3G, WIFI and Bluetooth, and is packed with 3,000 mAh battery. The rugged design and IP54 rating make the device suitable for deploying across multiple environments, either indoors or outdoors.



NEW
PRODUCT

MOXA7

HANDHELD BIOMETRIC TABLET FOR TIME ATTENDANCE & ACCESS CONTROL



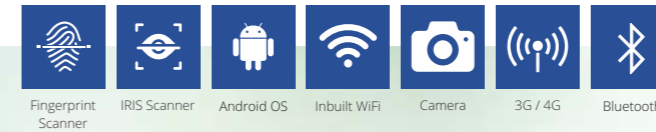
MOXA7 is a portable biometric tablet, packed with essential features to meet diverse biometric enrollment and identification project needs. The device is equipped with a reliable fingerprint scanner and camera to capture high-quality images and includes a stunning 7-inch display. The device features accuracy, reliability, and durability that you need for any biometric identity management application.



Mantra Softech India Pvt. Ltd.

mDesk8

FINGERPRINT & IRIS SCANNER DEVICE



mDesk8 elegantly combines fingerprint, IRIS, and 8-inch touch screen making it a beautiful and sophisticated biometric tablet. Its state-of-the-art design powered by 1.3 GHz MediaTek MT8735V/W Quad Core processor, working on the Android operating system makes the device suitable for multiple identity-based solutions. mDesk8 comes with 2GB RAM and 16GB inbuilt memory, expandable up to 64 GB that has ample space to store lots of fingerprint templates/photos.

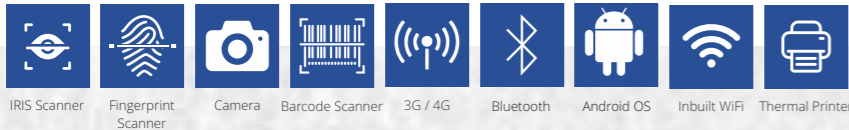
With STQC certified fingerprint and iris sensors, the terminal is designed to accommodate the increasing use of biometric authentication. mDesk8 supports connectivity through USB or Bluetooth interface. It has the built-in front end 2MP camera and rear 5MP auto focus camera. Our device includes a 6000 mAH battery that provides plenty of juice to run throughout the day.



COMPANY PROFILE

mTerminal100

BIOMETRIC POS TERMINAL



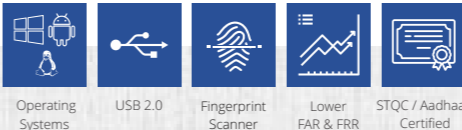
Mantra mTerminal100 is an IRIS and Fingerprint scanner based POS machine which is developed based on the latest embedded technology. The use of biometric fingerprint recognition within a POS system adds value to the customer apart from the use of barcodes and/or pin numbers which directly increases the overall operational efficiency of the business.

mTerminal100 supports an external keyboard which can be connected through USB or Bluetooth interface. With STQC certified fingerprint and iris sensors, the terminal is designed to accommodate the increasing use of biometric authentication for payments. Our biometric POS terminal is best suited for implementing fingerprint authentication for multiple financial services such as branchless banking, microfinance, government to person (G2P) payments, and likewise.



MFS500

OPTICAL FINGERPRINT SCANNER



MFS500 is a high-quality USB fingerprint sensor for fingerprint authentication of an individual to access information from the database, to access computer-based system or to access a network security system. The device utilizes optical sensing technology for efficiently recognizing poor quality fingerprints. MFS500 can be used for authentication, identification and verification functions that let your fingerprint act like digital passwords that cannot be lost, forgotten or stolen. Hard optical sensor is resistant to scratches, impact, vibration and electrostatic shock.



SECURITY SOLUTIONS FOR INDUSTRY 4.0

A One-Stop Solution for Innovative & Effective Biometric and RFID Application



Mantra Softech India Pvt. Ltd.

In the prevailing security scenarios, physical security is not adequate to confer impregnability and secure the enterprise-grade assets. Consequently, both the physical assets and the informational data seek enterprise-wide smart identity mechanism solutions to insulate risks with the help of intelligent and functional technology.

The effective automation system complements the human resources and security infrastructure to thwart any subtle or coerce tricks employed by the perpetrators. The electronic identity not only creates a denial deterrence or authorizes access to the right entity but also provides real-time data and footprints of users in premises, assists in measuring the usage of resources, strategizing, security processes optimization, security infra optimization, effecting statutory compliance governance, wage calculation, and loss of working hours by its governance processes.

Access regulation at critical areas effectively protects proprietary confidential information and business assurance of the enterprise; besides adopting administrative measures. It also develops the operational discipline of an organization for complying with the policy and other statutory regulations to obviate any probable litigation, violations or omissions needed to run a business.

The enterprise identity system is the backbone of any security or automation projects that assign functional ID or service ID to all enterprise personals and machines/vehicles. In a service ID system, an individual receives a unique identifier from the organization that is used for identity assertion and verification. It includes ensuring uniqueness in the system, interoperability, privacy by design, reaching scale, avoiding vendor lock-in, maintaining affordability, and so on.

MORZEL OFFERS THE FOLLOWING SOLUTIONS

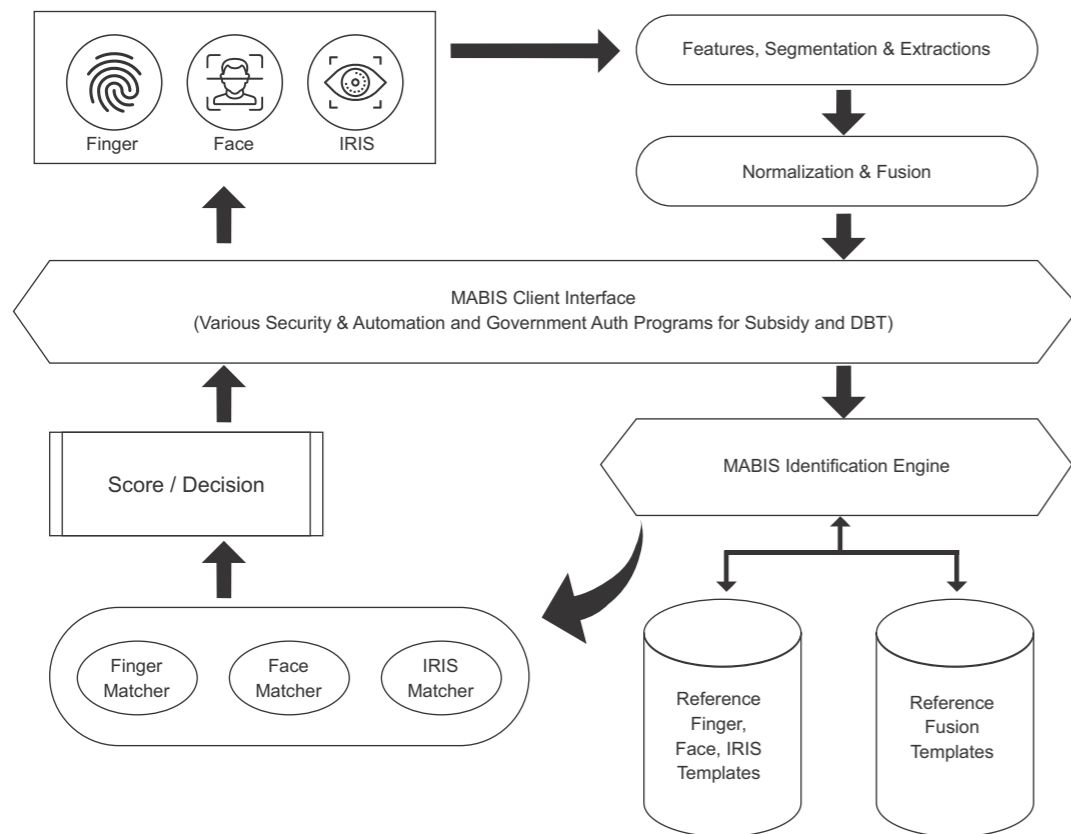


Every Industry requires an integrated, custom tailored solution for better performance and efficiency. Mantra is moving beyond the Traditional Biometrics solution by introducing integrated Biometric solutions and offering customized solutions. Mantra develops innovative technology-based products and solutions for a customized requirement in any Industry-specific applications.

COMPANY PROFILE

MULTI MABIS

An Automated Biometric Authentication System



MULTI MABIS is a fast Automated Biometric Authentication System, capable of capturing and storing multiple biometric templates within a short period of time. It utilizes various identification methods like Fingerprint, IRIS, and Facial recognition to store, update or delete biometric data of users. This high-performance authentication system can be used with any large-scale biometric system in the back-end to de-duplicate, check and remove biometric data having inconsistencies. MULTI MABIS supports computing resource intensive one-to-many (1: N) and one-to-one (1:1) biometric matching operations for precise, fast and accurate identification of individuals.

For a large-scale biometric project like citizen identification, biometric data of millions of people are required to be captured and stored. Usually, all data is collected in local database and then merged into a central database. Before a citizen ID card is issued, the authorized agency makes sure that one person did not register multiple times. This can be achieved using Biometric De-duplication software such as in MULTI MABIS. Moreover, to merge any decentralized biometric data into a central system requires identifying all duplicate records to unify transaction data under unique personal identities. Therefore, any decentralized biometric projects in areas such as citizen ID development, banking, micro-credit lending, voter ID issuance, access control, and hospitals or rural clinics can significantly benefit from a MULTI MABIS system that enrolls and identifies an individual, self-check the de-duplication and supports user's biometric data removal functionality.

KEY FUNCTIONS OF MULTI MABIS



Enrollment

Enrollment is the process of capturing and registering the user's biometric data such as fingerprint, IRIS, and facial images. MULTI MABIS system enrolls the users by recording their biometric data and storing them into the database. While registering a user in the database, MULTI MABIS will self-check the de-duplication of a new user's biometric data by comparing it against large biometric database stored on the server.



Identification

Biometric identification consists of determining the identity of a person. The process involves capturing an individual's biometric data, then comparing the biometric data with enrolled biometric database. MULTI MABIS support identification process, by quick and accurate matching of the captured biometric data of users with the stored/enrolled biometric record from the database.



Removal

Removal is the process of removing a user biometric data from the database. Once the user has been removed, it will not be reverted in the system. Hence, MULTI MABIS facilitates an irreversible biometric user data removal process.

Features

- Biometric Enrollment and Identification
- Fingerprint, Iris, and Facial Recognition
- Rapid Matching Process
- Fusion Identification
- Multiple Biometric Device Model
- API Platform
- Full MINEX Compliance
- Multiple Database Platform

CLIENT FACING BRANDS

We develop smarter technology to improve businesses. Our knowledge and experience allow us to anticipate changes across geographies and industries and deploy the right solutions rapidly. In the most challenging and demanding environments, we help our customers achieve their safety, security, and business goals. For more than a decade, Mantra has been delivering the latest solutions to unique business challenges. Today, Mantra Integrated Security brings these solutions to enterprise, mid-size, and small business companies, kindly look at some of our clients.



सेल SAIL



Ingenuity for life.



The Taste of India

